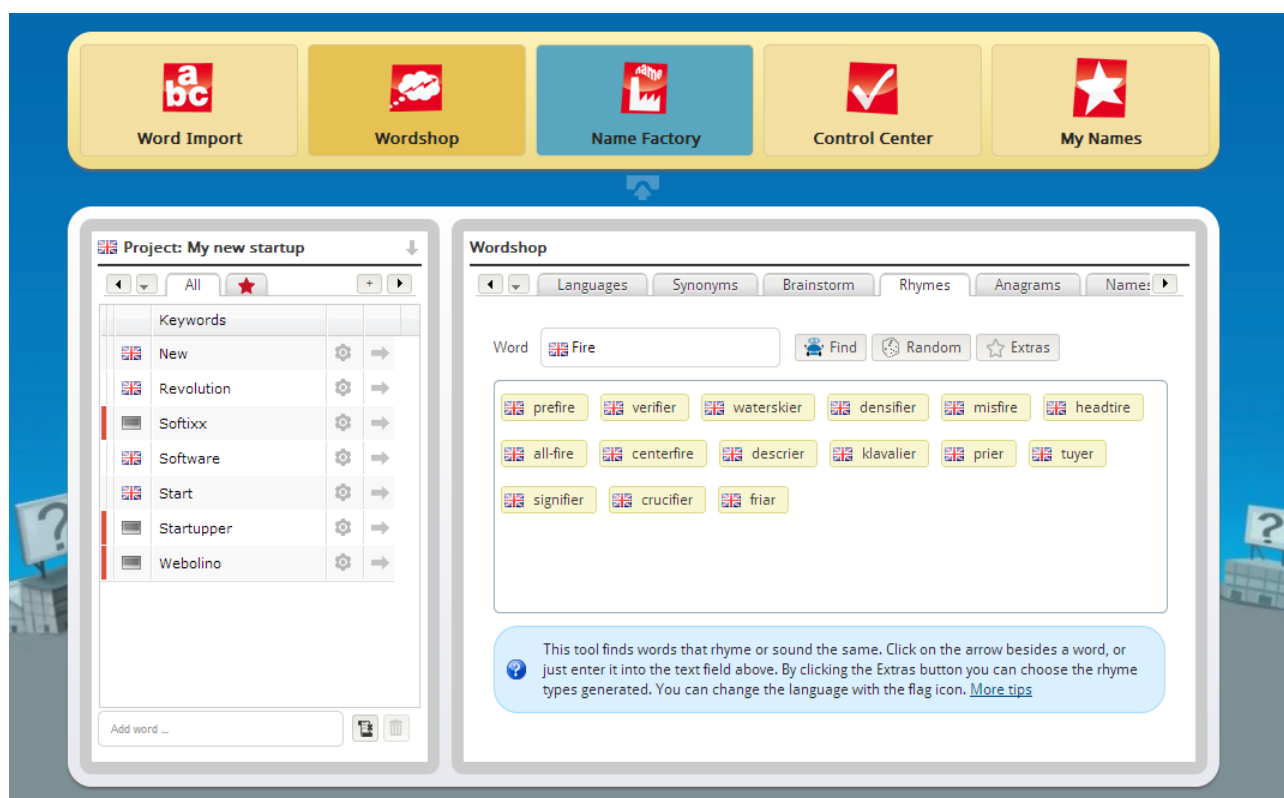


# namerobot

## Make a name for yourself

## Updated Rhymes tool: new logic and six different rhyme types

A Wordshop classic has undergone an extensive upgrade: the **Rhymes tool** has a completely new **internal logic** so that now it can not only produce 'perfect' rhymes but five other types too. How exciting is that?



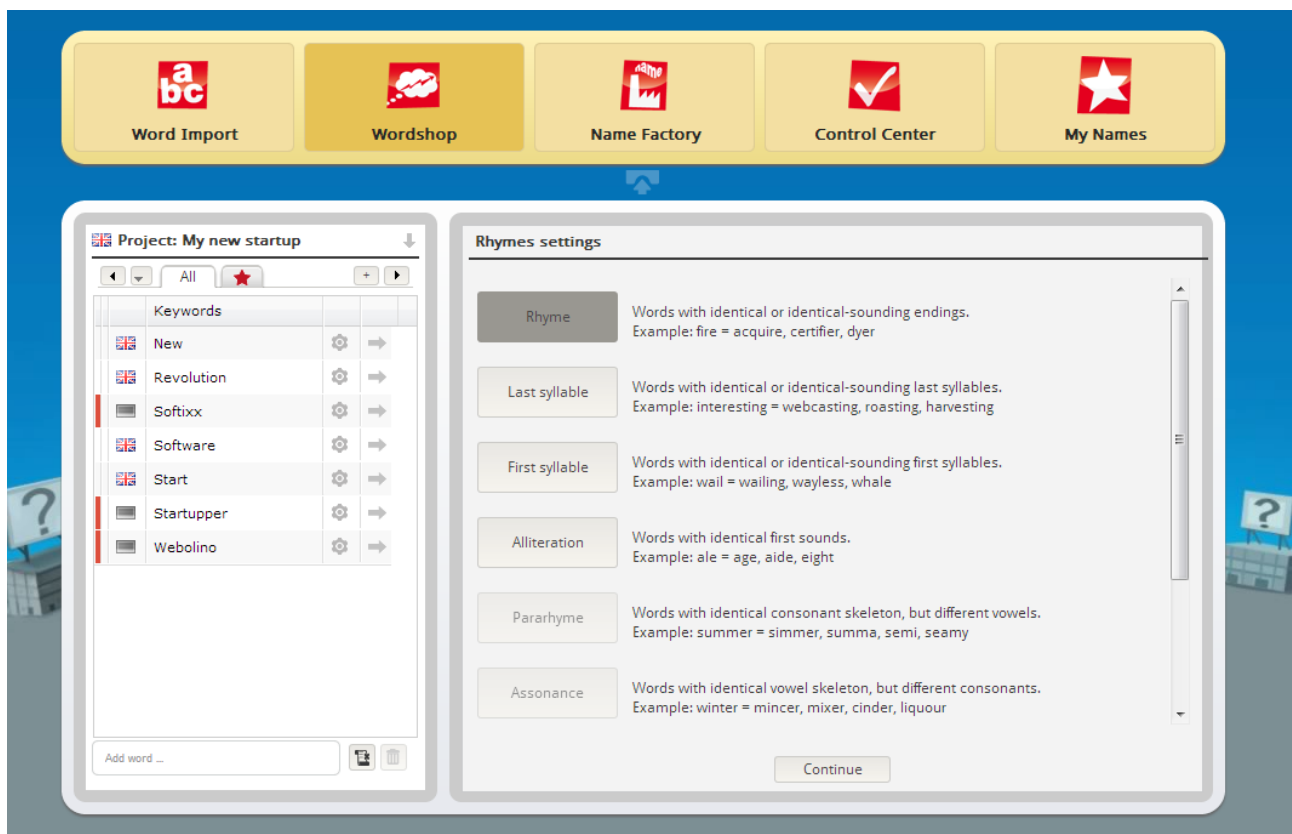
## Six different types of rhymes

The Rhymes tool now generates **six different rhyme types** which you can select in the Extras. By default, only 'perfect' rhymes are chosen. This makes the Rhymes tool easy to use and only yields 'perfect' rhymes in the results. You

News published: 22/11/2013

can select the following additional rhyme types in the Extras for less obvious results:

- **Last syllable:** finds words with the same final syllable as the search word, e.g. interesting webcasting, roasting, harvesting
- **First syllable:** finds words with the same first syllable as the search term, e.g. wail, wailing, wayless, whale
- **Alliteration:** finds words which have identical initials, e.g. ale, age, aide, eight - One of the most simple and effective stylistic devices in marketing!
- **Pararhyme:** finds words with the same consonants as those in the search word, e.g. summer, simmer, summa, semi, seamy
- **Assonance:** finds words with the same vowels as those in the search word, e.g. winter, mincer, mixer, cinder, liquor



## Completely new rhyme algorithm

The logic behind the Rhymes tool has also been completely rewritten. While the old tool was based on rewriting rules for letters, the new Rhymes tool now only operates on a **pronunciation basis**, because you obviously cannot tell from the spelling alone whether two words sound the same or not.

### Would like to see some examples?

- **Banana** and **Montana** rhyme. - That's obvious!
- **Through** and **blue** also rhyme, even though they do not share the same

News published: 22/11/2013

last few letters.

- It gets even better: just take a look at: **though**, **tough**, **cough**, **plough**, **through**, and **lough**: they all end with the same letters, but each one is pronounced differently and does not rhyme with others.

Fortunately, the new rhyming tool can handle these irregularities, thanks to its **phonetic database**!

We hope you enjoy our new Rhymes tool and hope you will find many unexpected and **original rhymes** and word ideas.